

Project Type: Religious

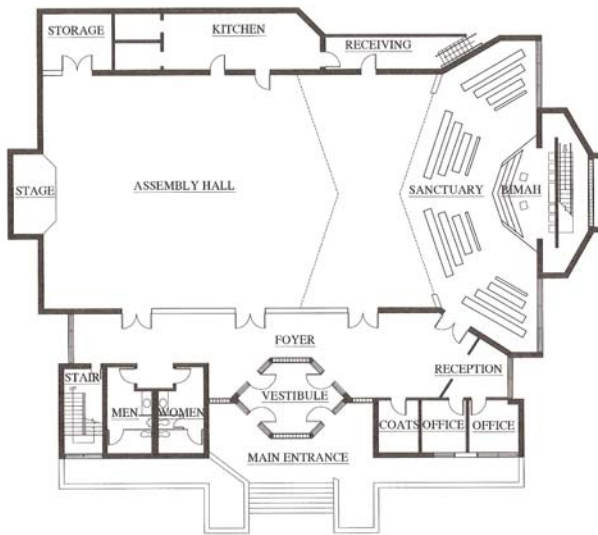
New Construction

Project: Temple Chayai Shalom 1985
Location: Mechanic Street, Easton, MA
Size: 17,600 sq.ft.

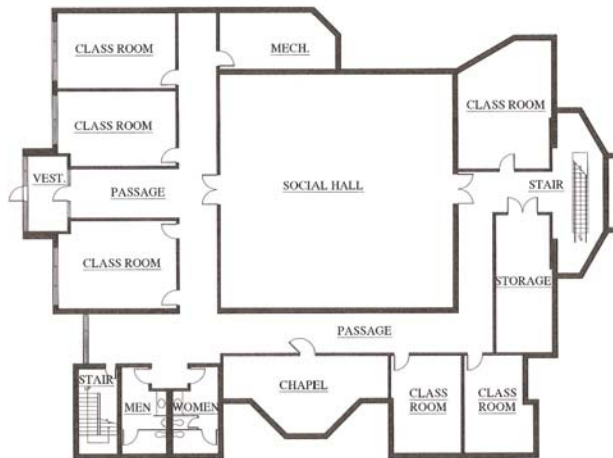
Project Description:

The project consisted of Schematic Design, Design Development and Preliminary Cost Estimate for a free-standing two-story full service synagogue. The proposed building would consist of entry foyer; gift shop; administrative and clergy offices; main sanctuary; sanctuary expansion/function rooms via folding partitions; chapel; kitchen; classrooms; library, separate entrance for religious school students; secondary function room and multipurpose area; activity room and various support facilities.

The main focus was to design a sanctuary for the growing congregation and to provide for the expansion of the sanctuary to accommodate the increased capacity of congregants during high holidays and life cycle events, to meet the present and future requirements.



PROPOSED FIRST FLOOR PLAN



PROPOSED LOWER LEVEL PLAN

